

LT STRUCTURAL

STRUCTURAL STEEL DETAILS FOR CONSTRUCTION AND FABRICATION IN AUTOCAD AND AUTOCAD LT[©]

LT Structural offers structural steel designers and draughtsmen a method of transforming their AutoCAD LT drawing software into a powerful structural steel design utility.

With such a comprehensive library of design tools for steelwork construction and fabrication, LT Structural is powerful and flexible enough to take on any structural steelwork project with ease and efficiency.

Compact and Efficient for Ease of Use

LT Structural commands are contained within one simple toolbar, giving you immediate access to thousands of structural symbols.

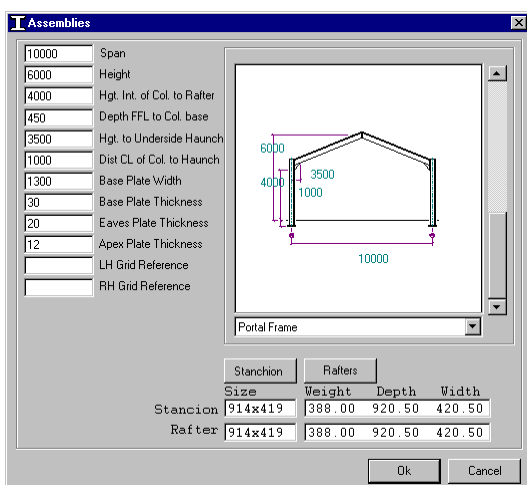


Each toolbar button brings up a clear and intuitive dialogue box showing the setting for that component.

All of the dialogue boxes are designed to allow easy identification and selection of the required symbol. Where the symbols can be subdivided into logical areas, tabs on the dialogue allow you to change between pages.

Virtually all of the symbols within LT Structural are parametric, giving high flexibility in the variation of symbol sizes available.

Assemblies Where You Control the Sizes

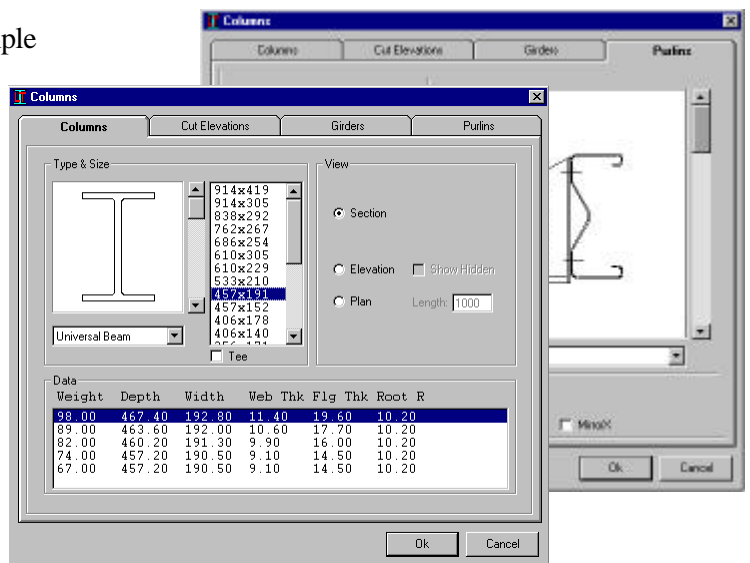


The assemblies dialogue allows you to chose Portal frame, Column & plate, Column & foundation plate, and Rafter assemblies. Having selected the assembly you require the individual sizes can be set giving you complete control.

Beams and Columns at Standard sizes

LT Structural includes standard sizes for a comprehensive range of columns, including : Universal Beams, Universal Columns, Joists, Equal and Unequal Angles, Channels, Rectangular and Circular sections, and Tees.

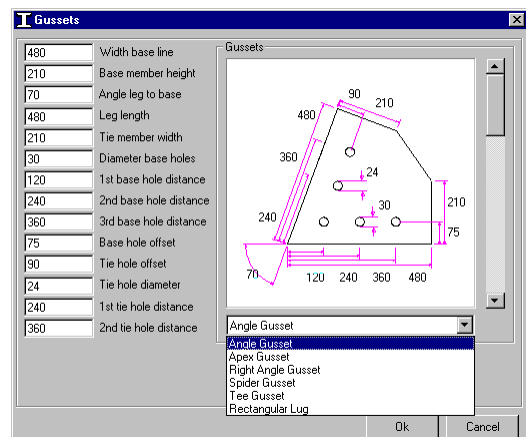
You can simply select the required section and LT Structural will offer the range of available sizes and weights for you to choose from.



In addition to the columns, you can easily insert cut elevations, girders and purlins by selecting the size from the dialogue box.

Gusset plates the way you want them

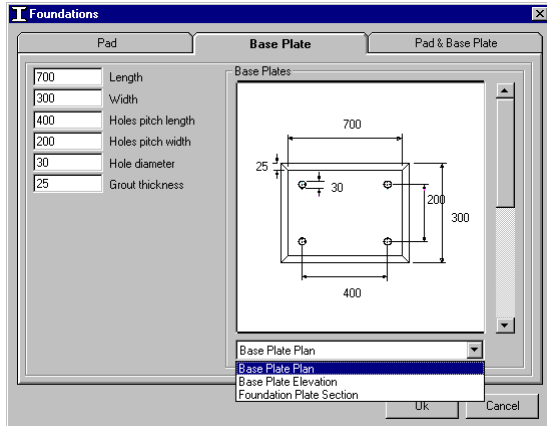
Gusset plates can vary widely in design but using parametric symbols for right angle, angled, apex, 'T', spider and rectangular lug gusset plates, you have complete control over the individual dimensions of each plate.



Define Foundations and Base Plates with Ease

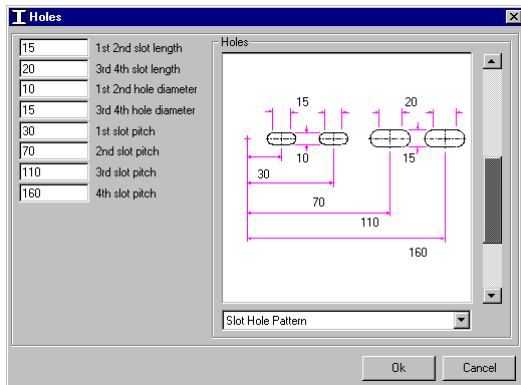
When you need to add pads, base plates, or assembled pad and base plates, LT Structural offers a simple dialogue interface to allow you to define the size you require.

From this dialogue you can insert both plan and elevation drawings of the component, which will be attached to your cursor in AutoCAD when you select OK.



Hole Patterns are Created in Seconds

Hole patterns are another area where parametric symbols offer significant productivity gains.

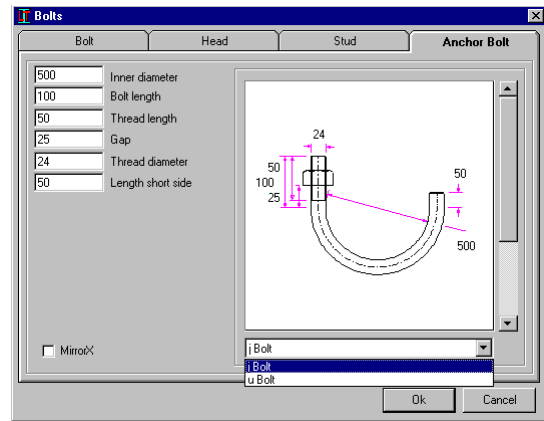


When ever you require plain or counterbored holes in linear and rectangular array patterns, simply select the holes command and choose the holes layout required and enter the values.

Bolts

As you would expect, LT Structural includes many standard designs of bolts. These bolts have been created as parametric symbols to again give the user control and flexibility when selecting sizes.

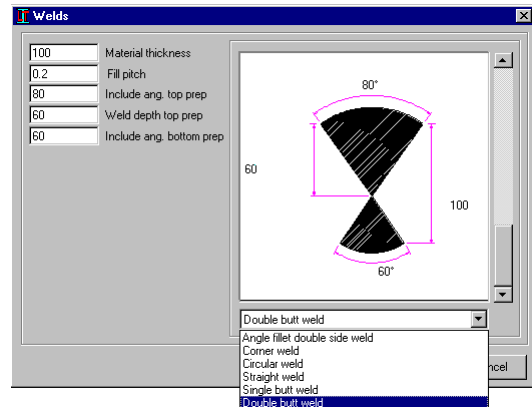
Both 'U' bolts and 'J' bolts are included amongst the standard bolt types and sizes in LT Structural.



Parametric Weld Symbols

Even the weld symbols in LT Structural allow you the control over their individual dimensions of the various types of weld you may require.

These include angle, fillet, double side, circular, straight weld runs, corner fillets, and single/double side butt.



High Productivity ; Low Cost Solution

LT Structural offers a quick and efficient method of undertaking many of the drawing tasks associated with structural design. The parametric symbols in LT Structural provide AutoCAD LT with productivity gains never before available within this software, and therefore represents a very cost effective structural design solution.

LT Structural for AutoCAD LT 97 - 2004 and AutoCAD R14 - 2004

LT Structural is a trademark of CADlogic Limited. AutoCAD LT is a trademark of Autodesk Inc.

