

▶ Architect 2000 V4

Professional Architectural Design for AutoCAD

Architect 2000 enhances AutoCAD by providing additional functionality to automate much of the building design process. Architect 2000 boasts an impressive range of commands including intelligent creation and editing of Doors, Windows, Staircases, Roofs, etc. and automatic creation of a 3D walkthrough model direct from your building plan.

Save Wall, Window and Door Styles

Intelligent functions for inserting and editing Windows and Doors

Comprehensive library of Architectural Symbols

User-Defined Layering

3D Walkthrough creation straight from 2D plan

Automatic Wall Dimensioning

Modular Building Sections

Automatic Elevations



Transform your AutoCAD into an intelligent Architectural Design System

The interaction of Walls, Doors and Windows in Architect 2000 allows you to create and edit design layouts very efficiently. The flexibility of the Wall drawing tools achieves significant time savings, with automatic teeing in, tidying of intersections and repair of gaps. Walls also update when inserting or moving a Door or Window. Wall, Window and Door styles can be saved for fast re-selection in other drawings, saving more time and ensuring repeatability and accuracy across all of your projects.

The intelligence which Architect 2000 brings to your AutoCAD drawings allows for the automatic creation of elevations, direct from information stored in the plan.

Architect 2000 offers a comprehensive library of parametric details to cater for every design requirement, including:- Doors, Windows, Staircases, Modular Building Sections, Structural Steelwork and more.

Architect 2000 enables you to create 3D walkthroughs straight from your 2D plans. A 3D file which can be viewed within an Internet browser is generated from the 2D layout, allowing you to walk through and fly around the building. The supporting 3D symbol library lets you add even greater detail to your walkthrough files.

Architect 2000 - The Professionals Choice

RAPID DRAWING TOOLS TO EASE THE DESIGN PROCESS

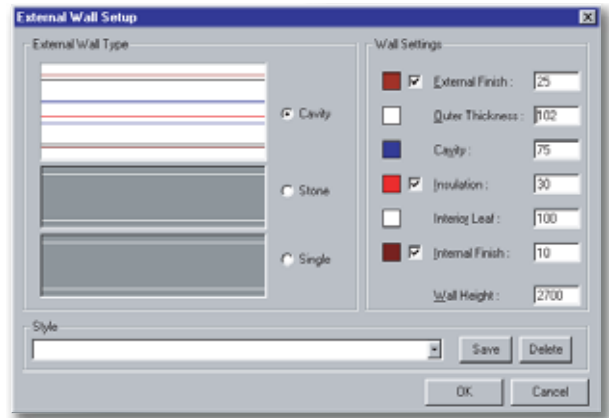
Architect 2000 transforms AutoCAD into an intelligent architectural design system by means of an impressive range of automated draughting tools. It enables you to optimise design efficiency, quality and accuracy, new business proposals and return-on-investment (ROI).

The ability to archive Wall, Window and Door styles saves you time and ensures repeatability throughout a project. And it's really easy to do: just set the parameters you require in the Wall, Window or Door dialog box and enter the name of your new style in the relevant field. The style is then available for selection on other drawings.

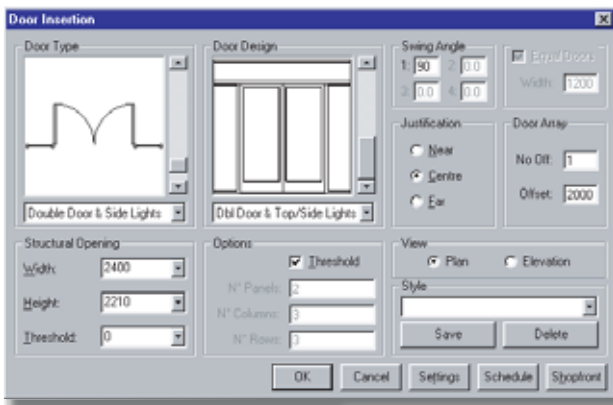
The integration of Architect 2000 into your design environment is not a problem as it has a user-defined layering system, which by default is set to match BS1192-AEC5. CI/SfB and Generic layering systems are also included as standard.

The intelligence of the Walls produced by Architect 2000 is the key to its flexibility and ease of use. External and Internal Wall styles are created within a simple dialog box by selecting the type (cavity, single, stone etc.) and entering the required dimensions. Architect 2000 automatically uses the settings for the selected style to build the Wall as you define either the Internal or External profile.

What is more, Architect 2000 boosts your productivity with automatic Wall breaks. An intuitive dialog box controls the break style for each Wall type. Then, when you insert a Door or Window, the structural opening is created with the appropriate break style. If the Door or Window is then resized, moved or deleted, the Wall is altered to suit. Architect 2000 saves you still more time with automatic teeing-in of Walls in and functions for tidying intersections.

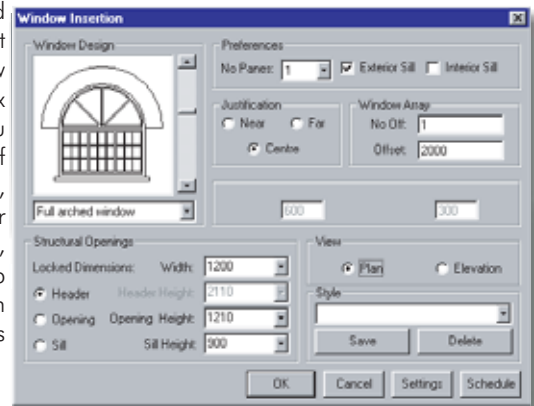


In addition to the wall types Solid, Fully Glazed, Half Glazed and Door/Window Office Partitioning can be added to your layouts. All of the Partition types are compatible with and can be viewed in the 3D Walkthrough facility.



Doors and Windows are equally straightforward to create with Architect 2000. Once again, any combination of settings can be saved as a style for future use. The Door dialog box allows you to select the elevation, sizes, style, type, jamb size/position and threshold options, whilst the Window dialog box allows you control of elevation, sizes, number of panes, jamb size/position

and sill options. The flexibility of Architect 2000's Doors and Windows means that almost any design can be produced.



Gable or Hipped Roofs can be created from a simple dialog by entering the pitch, fascia and overhang dimensions. The Roof is added to the indicated Wall in plan, with an option to tee into an existing Roof, if applicable. Furthermore, the intelligence stored in the plan view is accessed by the elevation command.

In no time at all, Architect 2000 creates the building elevation of a selected Wall automatically from the information stored in plan views of Walls, Windows, Doors and Roofs. You can select a viewing position, depth and area to determine the appearance of the chosen elevation.

You have complete control of stairs with Architect 2000. In plan you can define the style (straight, half or quarter turn, spiral), control the sizes and have a choice of winders, cut-lines and numbering entirely at your discretion. You also have access to a wide range of Elevations and Sections, with the option to conform to Building Regulations.

Architect 2000 - Transform your AutoCAD

Architect 2000 contains hundreds of symbols including Structural Steel details, Plumbing, Heating, Furniture, Electrical and Kitchen fittings, to help you add further detail to your designs. The majority are not just blocks that have to be stretched and scaled to the correct size, but are intelligent parametric symbols. This means that you can define the key dimensions and the symbol is automatically and instantly drawn to the size you require. As many of the symbols in Architect 2000 are available in elevation as well as plan, they can be used to quickly add detail to your internal or external elevations.

And it's never been easier to generate Building

Sections. Architect 2000 incorporates an extensive library of 2D construction details, so you can finish detailing your designs with minimal effort. The library contains parametric symbols for the Foundations, DPC, Floor Structure, Walls, Sills, Headers, Doors, Windows, Roof Trusses, Tiles and Fascias. You can use these to build a single or multi-storey building section in stages or you may select from a choice of standard pre-assembled modules.

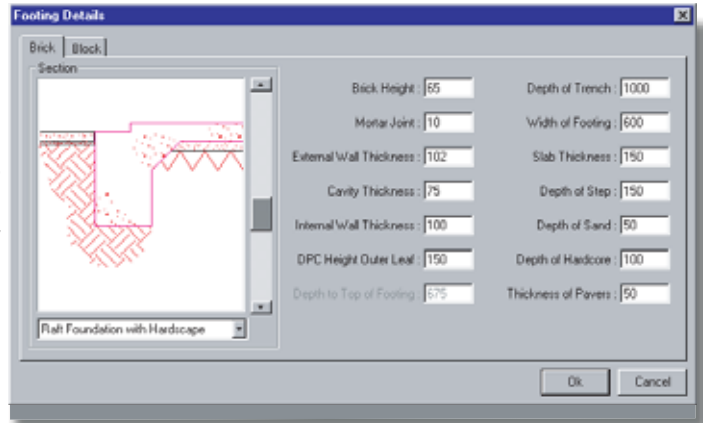
Now you can create stunning 3D walkthrough models of your designs, straight from 2D plan drawings. Architect 2000 creates a 3D file in VRML (Virtual Reality Modelling Language) format, which can be viewed within any Internet browser that supports it, allowing you to fly around and walk through the building with doors opening automatically.



includes a library of architectural textures which can be scaled and rotated when rendering individual building elements. The library of textures can be easily enhanced by adding your own specific requirements as simple image files, thus making the range of finishes you can achieve limitless.

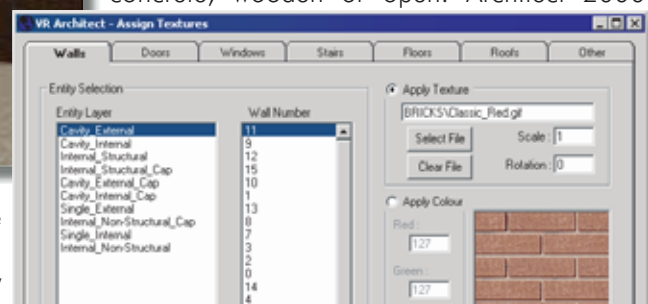
Complete your designs by utilising Architect 2000's range of 3D furniture and fittings, which include symbols for home and office furniture, kitchen, bedroom, bathroom, electrical fittings and landscape. All you do is insert the required 2D symbol into your plan, and Architect 2000 takes care of the rest. Once you have created the walkthrough file, it can be forwarded across the Internet, or posted onto a Website. This allows anyone involved in a building project, with or without CAD software on their PC and anywhere in the World, to immediately and simultaneously view your design.

The walkthrough file is also compatible with a number of rendering programs such as Artlantis, allowing you to present a photo-realistic image of a project to clients, interior designers and planners.



You can specify materials, textures or colours for each design element within your 2D drawing. This means that you exercise complete control over the look and feel of the 3D walkthrough generated. Even components of standard elements can be assigned an individual material, texture or colour. For example, with doors, the door, frame, lintel and threshold can all be given different materials, textures or colours.

It is even possible to specify the transparency of glass and to define a staircase as being either concrete, wooden or open. Architect 2000



Architect 2000 - Technical Overview

Walls

- All walls -
 - Component colour configuration
- External walls -
 - Cavity wall parameters -
Outer/Inner Leaf Thickness, Cavity, Insulation, External Finish, Internal Finish
 - Cavity wall end cap types -
Block Return, Thermal Break
 - Cavity wall end cap parameters -
Outer/Inner Leaf Projection & Reveal, Outer/Inner Splay X/Y
 - Single wall types -
Block, Stone
 - Single wall parameters -
Thickness, External Finish, Internal Finish
 - Single wall end cap parameters -
Outer Projection, Projection Depth, Outer/Inner Splay X/Y
- Internal walls -
 - Single wall types -
Structural, Non-Structural, Stud Walling
 - Single wall parameters -
Thickness, Left/Right Finish
 - Party wall parameters -
Left/Right Leaf Thickness, Cavity, Left/Right Finish
- Partion wall types -
 - Solid, Fully Glazed, Half Glazed and Door/Window
- Automatic wall dimensions
- Wall tidying -
 - Crossing/Teeing In
 - Corners
 - Mend wall

Windows

- Window designs -
 - Sash
 - Casement (multiple opening combinations)
 - Bay - 45-deg, 60-deg, Square, Projected & Walk-in
 - Bow - Curved, Straight, Projected & Walk-in
 - Arched - Full, Variable Radius
- Parameters - Sill, Jamb, Mullion, Struct' Opening,
 - No. of Panes, Divided Light
- Scheduling

Doors

- Door types -
 - Single, Double, Garage, Sliding, Roll-up, Pocket, Cased Opening, Shopfront, Door/Window combinations
- Door designs -
 - Plain Panel, Panel with Light (square, round, rectangle), Panelled with Glass, Two/Four/Six Panel, French, Louvre, Georgian
- Door parameters -
 - Threshold, Jamb, Stop, Leaf and Structural Opening dimensions
- Scheduling

2D Detailing

- Building sections, with modules for -
 - Foundation, DPC, Floor Structure, Wall, Sill, Header, Door, Window, Roof Truss, Roof Tile, Fascia, Stair, Timber Panel
- Structural steel details for construction and fabrication -
 - Portal Frame assemblies, Base Plate and Foundation Pads, Universal Beams, Universal Columns, Joists, Equal and Unequal Angles, Channels, Sections and Tees
 - Grid Layout
- Roofs
 - Gable or Hipped
- Stairs
 - Plan -
Straight, Quarter Turn, Half Turn, Spiral, Winders
 - Elevation -
Straight, Quarter Turn, Half Turn, Winders
- Symbols
 - Ceiling Grid Layout
 - Room Areas
 - Automatic Elevations
 - Fixtures and fittings - Electrical, Plumbing, Furniture, Kitchen
 - Site work and details - Landscape, Vehicles, Signage and Structural

3D Walkthrough

- VRML Walkthrough files
 - Support for the following Architect 2000 elements -
Walls, Windows, Doors, Roofs, Staircases
- 3D symbol library with -
 - Home and Office Furniture, Kitchen, Bedroom, Bathroom, Electrical Fittings and Landscape, Primitive shapes and Miscellaneous items including Escalators, Glass Canopies, Quoining and Gutters

**For more information go to www.cadlogic.com/architect2000
Architect 2000 is available from your preferred Autodesk supplier
To locate your nearest dealer or to order a free demo CD, contact CADlogic today**

CADlogic Limited, 3 Greenhill, Lichfield, Staffordshire, WS13 6DY, England
Phone: +44 (0)1543 419886 Fax: +44 (0)1543 419860 Email: sales@cadlogic.com Web site: www.cadlogic.com

Architect 2000 is a trademark of CADlogic Limited AutoCAD LT is a trademark of Autodesk Inc.